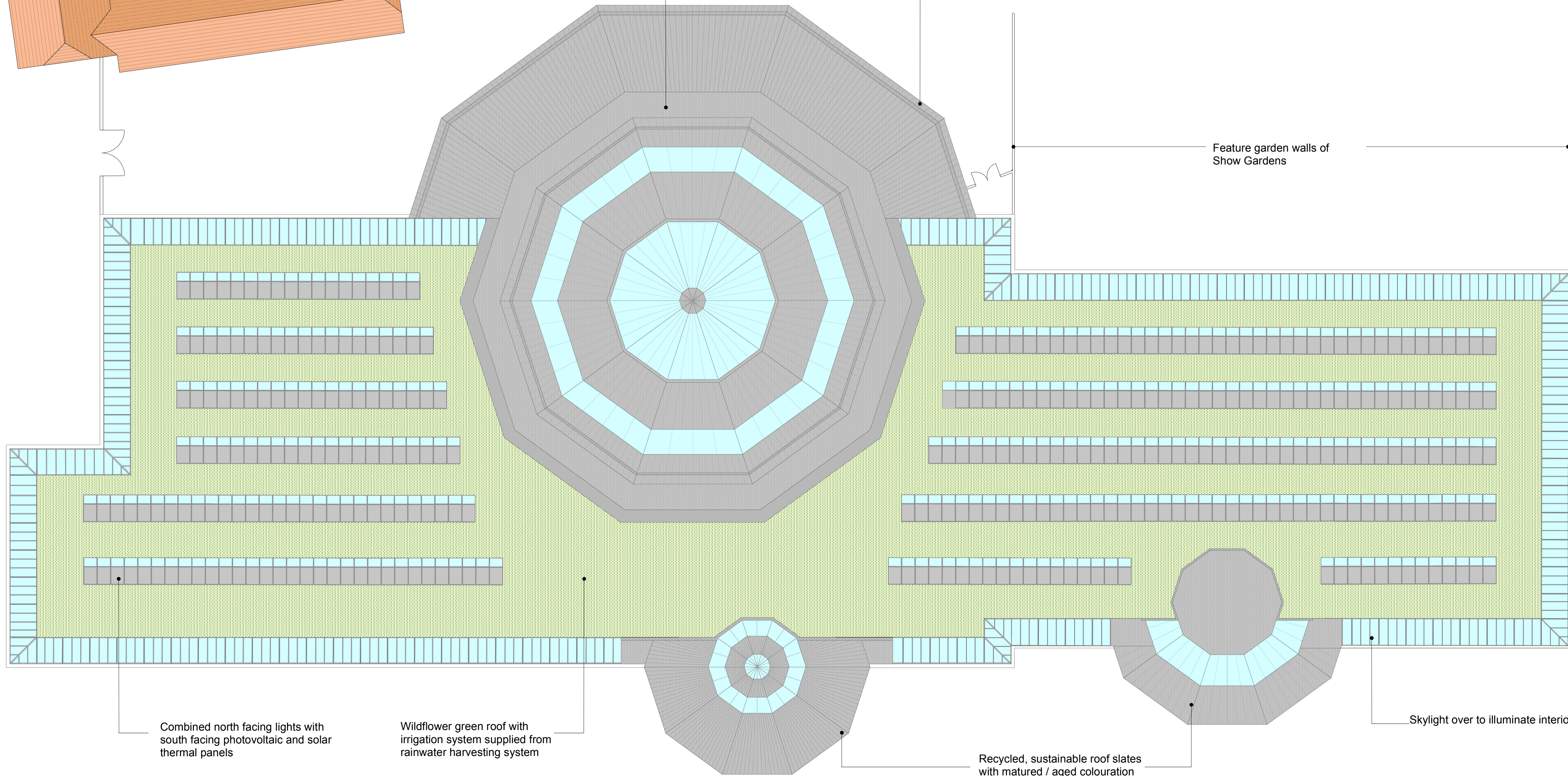


Walkway containing at random low level planters

Extended roof line and reduced eaves height with glazing set back to provide solar shading and reduce glare

Feature garden walls of Show Gardens



Combined north facing lights with south facing photovoltaic and solar thermal panels

Wildflower green roof with irrigation system supplied from rainwater harvesting system

Recycled, sustainable roof slates with matured / aged colouration

Skylight over to illuminate interior



HPW partnership ltd T 023 80 811808  
Wade Park Farm, Osney F 023 80 812953  
Southampton E design@hpw.co.uk  
SO51 6AG www.hpw.co.uk

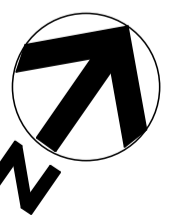
CLIENT  
Bunting & Sons

PROJECT  
Horkeley Park Heritage and Conservation Centre

TITLE  
Heritage and Conservation Centre Main Building Roof Plan

DRAWING NUMBER	REVISION
2362-8	
WORKSTAGE: D	STATUS: Planning
SCALE: @ A1 1:250	SCALE: @ A3 1:500
DATE: May 2008	REV DATE: JAN 2009
DRAWN BY: PT/AM	CHECKED BY: BAJ

DRAWING INFORMATION  
Copyright © 2008 HPW Partnership Ltd. All rights reserved. Unless stated, this drawing is the property of HPW Partnership Ltd and shall not be copied or used for any purpose without the written permission of an agent of the company. © HPW partnership ltd



Note:  
The Photovoltaics and solar thermal panels will not be noticeable from ground level

